



Andy Beshear
GOVERNOR

TRANSPORTATION CABINET

200 Mero Street
Frankfort, Kentucky 40601

Jim Gray
SECRETARY

April 25, 2023

CALL NO. 410
CONTRACT ID NO. 232202
ADDENDUM # 1

Subject: Marshall-Statewide Counties, 121GR23P033-CPTL & FE01
Letting April 27, 2023

- (1) Revised - General Summary - Page 40 of 61
- (2) Revised - Detail Sheet - Page 44 of 61
- (3) Revised - Material Summary - Pages 36-37 of 61
- (4) Revised - Proposal Bid Items - Pages 60-61 of 61

Proposal revisions are available at <http://transportation.ky.gov/Construction-Procurement/>.

If you have any questions, please contact us at 502-564-3500.

Sincerely,

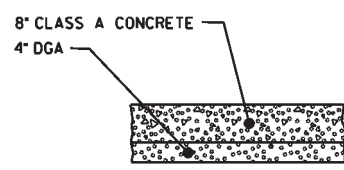
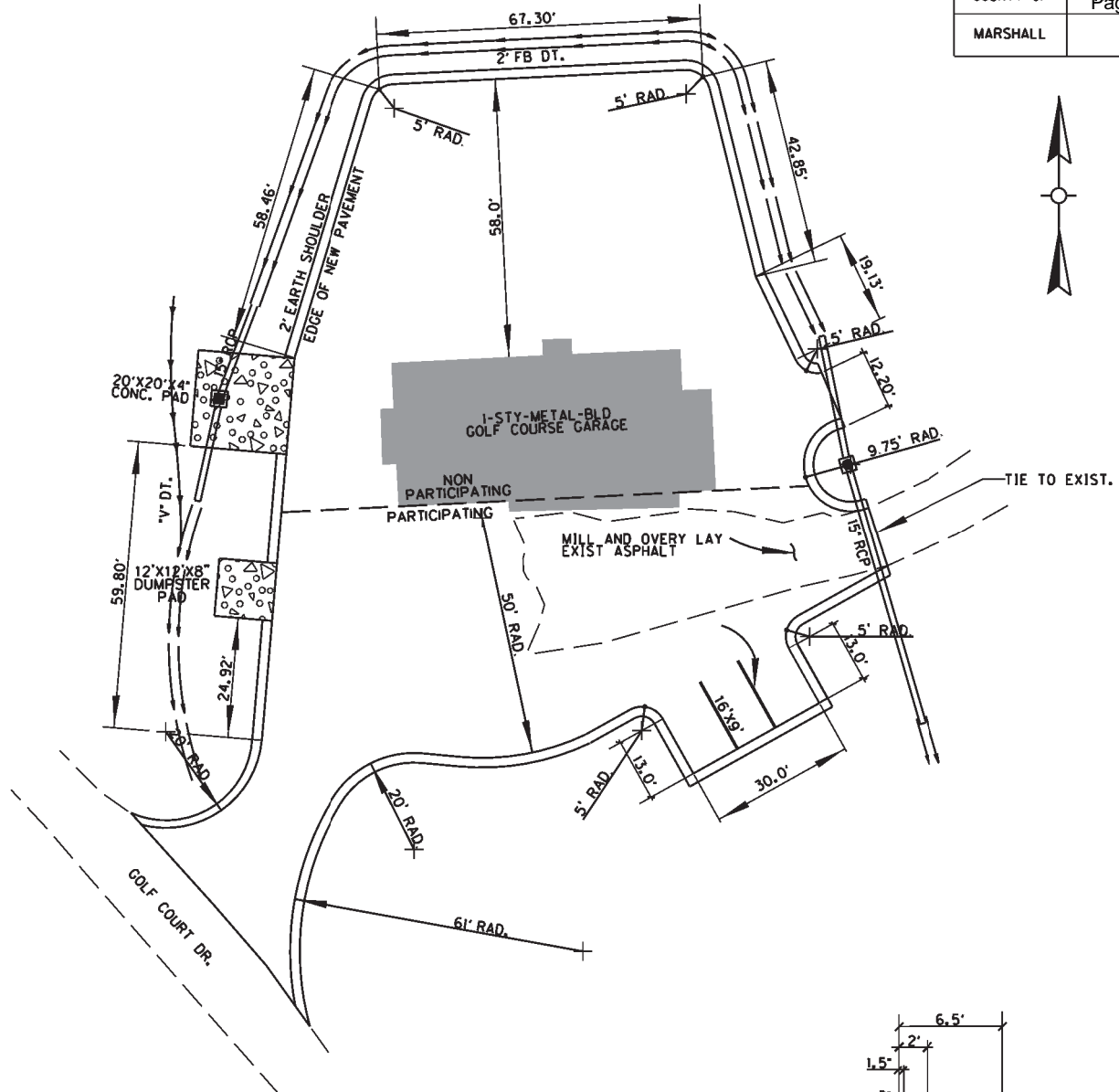
Rachel Mills,

A handwritten signature in black ink that reads "Rachel Mills".

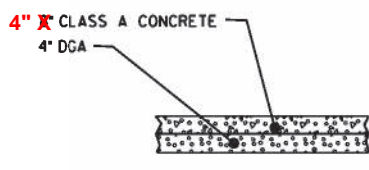
Rachel Mills, P.E.
Director
Division of Construction Procurement

RM:mr
Enclosures

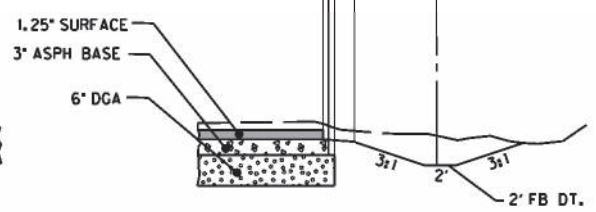
GENERAL SUMMARY				
KENTUCKY DAM STATE PARK (NON-PARTICIPATING)				
BID CODE	ITEM	UNIT	NOTE	QUANTITY
00001	DGA BASE	TON		248
00301	CL2 ASPH SURF 0.38 D, PG64-22	TON		47
00190	LEVELING AND WEDGING PG64-22	TON		16
00212	CL 2 ASPH BASE 1.0 D, PG 64-22	TON		113
00356	ASPHALT MATERIAL FOR TACK	TON		2.1
02200	ROADWAY EXCAVATION	CY		1676
01580	DROP BOX INLET TYPE 15	EACH		1
00461	15 INCH CULVERT PIPE	LF		82
02237	DITCHING	LF		100
02483	CHANNEL LINING CLASS II	TON		180
02602	GEOTEXTILE FABRIC CLASS I	SY		273
05950	EROSION CONTROL BLANKET	SY		320
02726	STAKING	LS		1
08180	CLASS A CONCRETE	SY		80
05985	SEEDING & PROTECTION	SY		1422.2
05961	FERTILIZER 10-10-10	TON		2
23274EN11F	TURF REINFORCEMENT MAT 1	SY		1102
20208NC	PAVEMENT MARKING- ARROWS	EACH		2
02585	EDGE KEY	LF		12
6571	PAVE MARKING-PAINT PARKING LOT (WHITE)	LF		32
02562	TEMPORARY SIGNS	SF		69
02650	MAINTAIN AND CONTROL TRAFFIC	LS		1
02569	DEMOBILIZATION	LS		1
24918ES601	CONCRETE-CLASS A 4"	SY		44
24918ES601	CONCRETE-CLASS A 8"	SY		16



DUMPSTER PAD DETAIL



WASH PIT PAD DETAIL



PARKING LOT PAVEMENT DETAIL

PARKING LOT PAVEMENT DESIGN	
1.25" CL 2 ASPHALT SURF 0.38D PG64-22	
3" CL 3 ASPHALT BASE 1.00D PG64-22	
6" DGA	
2 LAYERS OF TACK	
PAVING QUANTITIES PARTICIPATING	PAVING QUANTITIES NON-PARTICIPATING
52 TONS SURFACE	47 TONS SURFACE
124 TONS BASE	113 TONS BASE
260 TONS DGA	236 TONS DGA
STRIPING QUANTITIES	CONCRETE QUANTITIES
32 LF OF 4" PAINT (WHITE)	16 SY (8" DUMPSTER PAD)
	44 SY (4" WASH PIT PAD)
	12 TONS DGA

BEFORE YOU DIG

↓

The contractor is instructed to call 1-800-752-6007 to reach KY 811, the one-call system for information on the location of existing underground utilities. The call is to be placed a minimum of two (2) and no more than ten (10) business days prior to excavation. The contractor should be aware that owners of underground facilities are not required to be members of the KY 811 one-call Before-U-Dig (BUD) service. The contractor must coordinate excavation with the utility owners, including those whom do not subscribe to KY 811. It may be necessary for the contractor to contact the County Court Clerk to determine what utility companies have facilities in the area.



SCALE: 1"=30'

PAVING SHEET

MATERIAL SUMMARY

CONTRACT ID: 232202

121GR23P033-CPTL & FE01

MP07980292301

KENTUCKY DAM VILLAGE STATE PARK VARIOUS ROADS IN KENTICKY DAM VILLAGE STATE PARK ASPHALT SURFACE WITH GRADE & DRAIN.

Project Line No	Bid Code	DESCRIPTION	Quantity	Unit
0005	00001	DGA BASE	269.00	TON
0010	00190	LEVELING & WEDGING PG64-22	16.00	TON
0015	00212	CL2 ASPH BASE 1.00D PG64-22	124.00	TON
0020	00301	CL2 ASPH SURF 0.38D PG64-22	84.00	TON
0025	00461	CULVERT PIPE-15 IN	40.00	LF
0030	01580	DROP BOX INLET TYPE 15	1.00	EACH
0035	02200	ROADWAY EXCAVATION	218.00	CUYD
0040	02237	DITCHING	100.00	LF
0045	02483	CHANNEL LINING CLASS II	78.00	TON
0050	02562	TEMPORARY SIGNS	69.00	SQFT
0055	02585	EDGE KEY	36.00	LF
0060	02650	MAINTAIN & CONTROL TRAFFIC - PARTICIPATING	1.00	LS
0065	02673	PRECAST VEHICLE STOP	18.00	LF
0070	02676	MOBILIZATION FOR MILL & TEXT	1.00	LS
0075	02677	ASPHALT PAVE MILLING & TEXTURING	35.20	TON
0080	02726	STAKING - PARTICIPATING	1.00	LS
0085	03240	BASE FAILURE REPAIR	100.00	SQYD
0090	06571	PAVE MARKING-PAINT PARKING LOT	32.00	LF
0095	20208NC	PAVE MARK-PAINT ARROWS	2.00	EACH
0100	21415ND	EROSION CONTROL - PARTICIPATING	1.00	LS
0105	24970EC	ASPHALT MATERIAL FOR TACK NON-TRACKING	2.40	TON
0110	02569	DEMOBILIZATION	1.00	LS

MATERIAL SUMMARY

CONTRACT ID: 232202

121GR23P033-CPTL & FE01

MP12180292301

KENTUCKY DAM VILLAGE STATE PARK VARIOUS ROADS IN KENTICKY DAM VILLAGE STATE PARK ASPHALT SURFACE WITH GRADE & DRAIN.

Project Line No	Bid Code	DESCRIPTION	Quantity	Unit
0115	00001	DGA BASE	248.00	TON
0120	00190	LEVELING & WEDGING PG64-22	14.00	TON
0125	00212	CL2 ASPH BASE 1.00D PG64-22	113.00	TON
0130	00301	CL2 ASPH SURF 0.38D PG64-22	47.00	TON
0135	00461	CULVERT PIPE-15 IN	82.00	LF
0140	01580	DROP BOX INLET TYPE 15	1.00	EACH
0145	02200	ROADWAY EXCAVATION	1,676.00	CUYD
0150	02237	DITCHING	100.00	LF
0155	02483	CHANNEL LINING CLASS II	180.00	TON
0160	02562	TEMPORARY SIGNS	69.00	SQFT
0165	02585	EDGE KEY	12.00	LF
0170	02650	MAINTAIN & CONTROL TRAFFIC - NON-PARTICIPATNG	1.00	LS
0175	02726	STAKING - NON-PARTICIPATING	1.00	LS
0180	05950	EROSION CONTROL BLANKET	320.00	SQYD
0185	06571	PAVE MARKING-PAINT PARKING LOT	32.00	LF
0195	20208NC	PAVE MARK-PAINT ARROWS	2.00	EACH
0200	21415ND	EROSION CONTROL - NON-PARTICIPATING	1.00	LS
0205	24970EC	ASPHALT MATERIAL FOR TACK NON-TRACKING	2.10	TON
0210	02569	DEMOBILIZATION	1.00	LS
0215	24918ES601	CONCRETE-CLASS A - 4" - (ADDED 4-25-23)	44.00	SQYD
0220	24918ES601	CONCRETE-CLASS A - 8" - (ADDED 4-25-23)	16.00	SQYD

PROPOSAL BID ITEMS

232202

Page 1 of 2

Report Date 4/25/23

Section: 0001 - PARTICIPATING ROADWAY

LINE	BID CODE	ALT	DESCRIPTION	QUANTITY	UNIT	UNIT PRIC	FP	AMOUNT
0010	00001		DGA BASE	269.00	TON		\$	
0020	00190		LEVELING & WEDGING PG64-22	16.00	TON		\$	
0030	00212		CL2 ASPH BASE 1.00D PG64-22	124.00	TON		\$	
0040	00301		CL2 ASPH SURF 0.38D PG64-22	84.00	TON		\$	
0050	00461		CULVERT PIPE-15 IN	40.00	LF		\$	
0060	01580		DROP BOX INLET TYPE 15	1.00	EACH		\$	
0070	02200		ROADWAY EXCAVATION	218.00	CUYD		\$	
0080	02237		DITCHING	100.00	LF		\$	
0090	02483		CHANNEL LINING CLASS II	78.00	TON		\$	
0100	02562		TEMPORARY SIGNS	69.00	SQFT		\$	
0110	02585		EDGE KEY	36.00	LF		\$	
0120	02650		MAINTAIN & CONTROL TRAFFIC PARTICIPATING	1.00	LS		\$	
0130	02673		PRECAST VEHICLE STOP	18.00	LF		\$	
0140	02676		MOBILIZATION FOR MILL & TEXT	1.00	LS		\$	
0150	02677		ASPHALT PAVE MILLING & TEXTURING	35.20	TON		\$	
0160	02726		STAKING PARTICIPATING	1.00	LS		\$	
0170	03240		BASE FAILURE REPAIR	100.00	SQYD		\$	
0180	06571		PAVE MARKING-PAINT PARKING LOT	32.00	LF		\$	
0190	20208NC		PAVE MARK-PAINT ARROWS	2.00	EACH		\$	
0200	21415ND		EROSION CONTROL PARTICIPATING	1.00	LS		\$	
0210	24970EC		ASPHALT MATERIAL FOR TACK NON-TRACKING	2.40	TON		\$	

Section: 0002 - NON-PARTICIPATING ROADWAY

LINE	BID CODE	ALT	DESCRIPTION	QUANTITY	UNIT	UNIT PRIC	FP	AMOUNT
0220	00001		DGA BASE	248.00	TON		\$	
0230	00190		LEVELING & WEDGING PG64-22	14.00	TON		\$	
0240	00212		CL2 ASPH BASE 1.00D PG64-22	113.00	TON		\$	
0250	00301		CL2 ASPH SURF 0.38D PG64-22	47.00	TON		\$	
0260	00461		CULVERT PIPE-15 IN	82.00	LF		\$	
0270	01580		DROP BOX INLET TYPE 15	1.00	EACH		\$	
0280	02200		ROADWAY EXCAVATION	1,676.00	CUYD		\$	
0290	02237		DITCHING	100.00	LF		\$	
0300	02483		CHANNEL LINING CLASS II	180.00	TON		\$	
0310	02562		TEMPORARY SIGNS	69.00	SQFT		\$	
0320	02585		EDGE KEY	12.00	LF		\$	
0330	02650		MAINTAIN & CONTROL TRAFFIC NON-PARTICIPATING	1.00	LS		\$	
0340	02726		STAKING NON-PARTICIPATING	1.00	LS		\$	
0350	05950		EROSION CONTROL BLANKET	320.00	SQYD		\$	
0360	06571		PAVE MARKING-PAINT PARKING LOT	32.00	LF		\$	
0380	20208NC		PAVE MARK-PAINT ARROWS	2.00	EACH		\$	

PROPOSAL BID ITEMS

232202

Page 2 of 2

Report Date 4/25/23

LINE	BID CODE	ALT	DESCRIPTION	QUANTITY	UNIT	UNIT PRIC	FP	AMOUNT
0390	21415ND		EROSION CONTROL NON-PARTICIPATING	1.00	LS		\$	
0392	24918ES601		CONCRETE-CLASS A 4" - (ADDED 4-25-23)	44.00	SQYD		\$	
0394	24918ES601		CONCRETE-CLASS A 8" - (ADDED 4-25-23)	16.00	SQYD		\$	
0400	24970EC		ASPHALT MATERIAL FOR TACK NON- TRACKING	2.10	TON		\$	

Section: 0003 - PARTICIPATING DEMOBILIZATION

LINE	BID CODE	ALT	DESCRIPTION	QUANTITY	UNIT	UNIT PRIC	FP	AMOUNT
0410	02569		DEMOBILIZATION	1.00	LS		\$	

Section: 0004 - NON-PARTICIPATING DEMOBILIZATION

LINE	BID CODE	ALT	DESCRIPTION	QUANTITY	UNIT	UNIT PRIC	FP	AMOUNT
0420	02569		DEMOBILIZATION	1.00	LS		\$	